



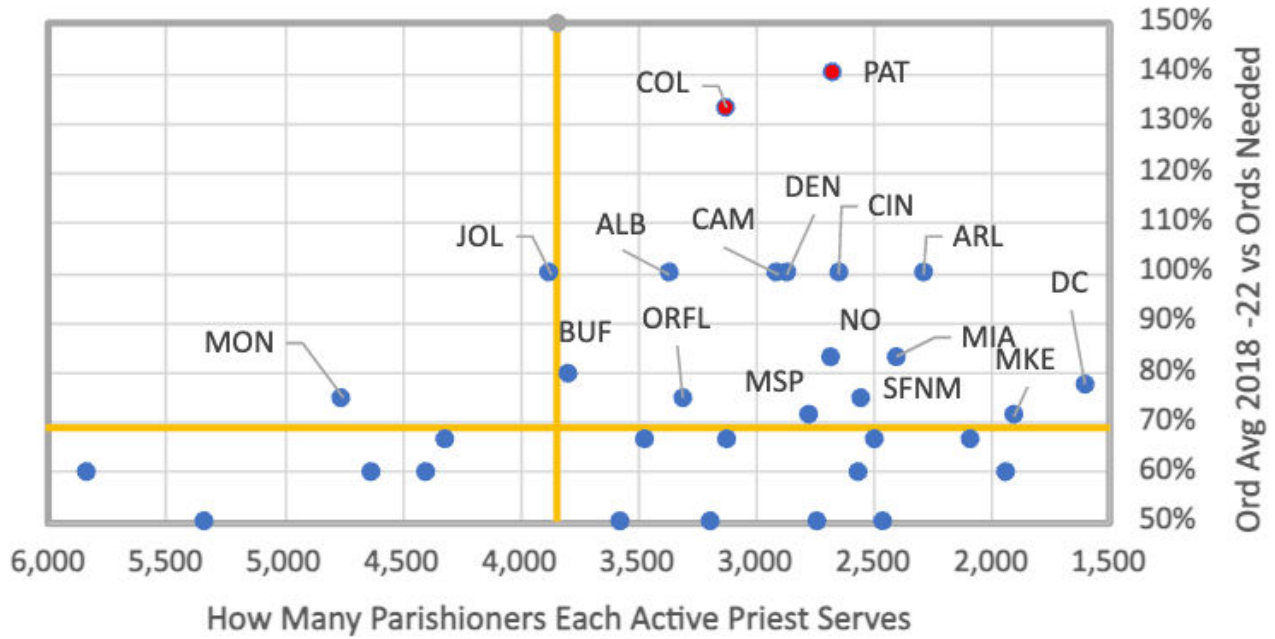
5-year Ordination Averages | Tier 2 | 300,000-750,000 Catholics | 41 Dioceses

(ARCH)DIOCESE	Diocese Abbrev.	How Many Parishioners Does Each Active Priest Serve In the Diocese in 2022	Priestly Ordination Avg 2018-2022 vs Priestly Ordinations Needed 2022*
Seattle, Washington		5,341	50%
St. Paul/Minneapolis, Minnesota	MSP	2,780	71%
El Paso, Texas		8,322	60%
San Jose, California		5,839	60%
Metuchen, New Jersey		4,631	60%
Austin, Texas		4,324	67%
Washington, DC	DC	1,610	78%
Hartford, Connecticut		4,376	40%
Trenton, New Jersey		4,507	40%
Las Vegas, Nevada		13,191	25%
Pittsburgh, Pennsylvania		3,291	33%
Cleveland, Ohio		2,571	43%
Providence, Rhode Island		4,845	40%
Denver Colorado	DEN	2,866	100%
Buffalo, New York	BUF	3,793	80%
Charlotte, North Carolina		4,406	60%
New Orleans, Louisiana	NO	2,681	83%
Milwaukee, Wisconsin	MKE	1,910	71%
Joliet, Illinois	JOL	3,874	100%
Baltimore, Maryland		2,495	67%
Miami, Florida	MIA	2,402	83%
St. Louis, Missouri		2,095	67%
San Francisco, California		3,576	50%
Cincinnati, Ohio	CIN	2,655	100%
Arlington, Virginia	ARL	2,293	100%
Paterson, New Jersey	PAT	2,675	140%
Rockford, Illinois		3,193	50%
Portland, Oregon		2,569	60%
Orlando, Florida	ORFL	3,311	75%
Monterey, California	MON	4,756	75%
Oakland, California		1,944	60%
Salt Lake City, Utah		6,424	33%
Bridgeport, Connecticut		2,748	50%
Columbus, Ohio	COL	3,130	133%
Laredo, Texas		8,213	67%
Santa Fe, New Mexico	SFNM	2,558	75%



(ARCH)DIOCESE	Diocese Abbrev.	How Many Parishioners Does Each Active Priest Serve In the Diocese in 2022	Priestly Ordination Avg 2018-2022 vs Priestly Ordinations Needed 2022*
Scranton, Pennsylvania		2,461	50%
Toledo, Ohio		3,476	67%
Albany, New York	ALB	3,365	100%
Rochester, New York		3,121	67%
Camden, New Jersey	CAM	2,911	100%

Tier 2 {5 Yr Ord vs Need}



5 Year Average (2018-2022)

